

Battersea Arts Centre

Rebecca Holt, Executive Director and Deputy CEO, Battersea Arts Centre

Martin Lydon, Associate, Haworth Tompkins

Theatres Trust
Conference 19:
Centre Stage
Artist and audience
at the heart of theatres



#CentreStage19



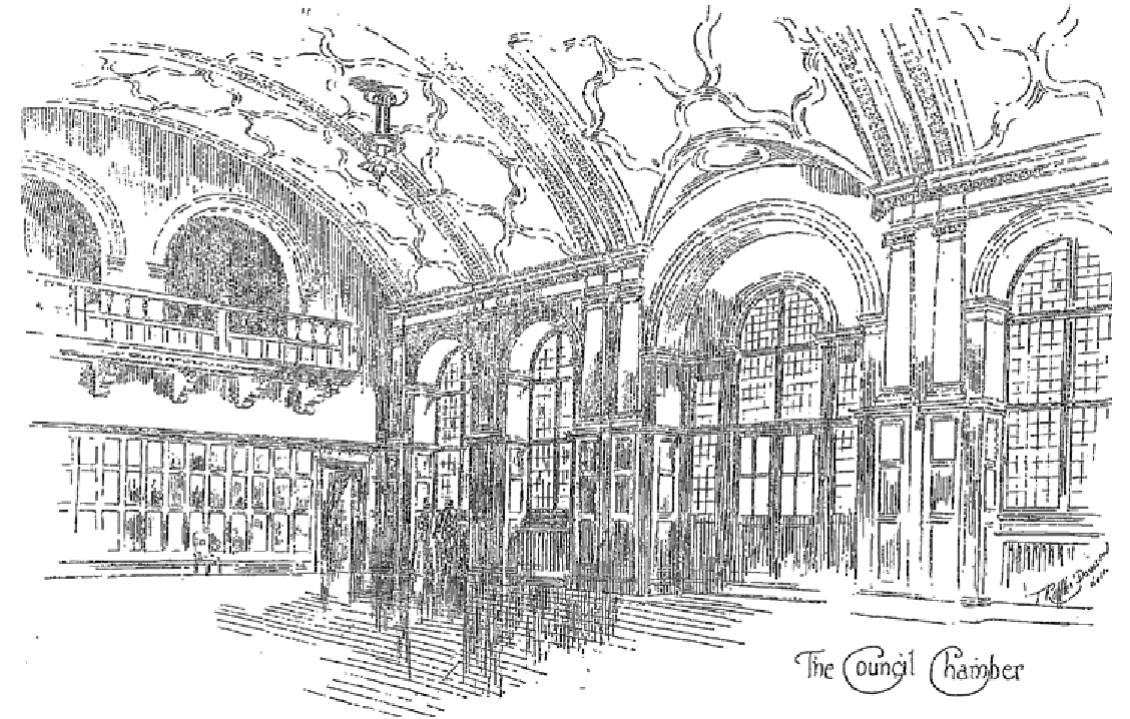
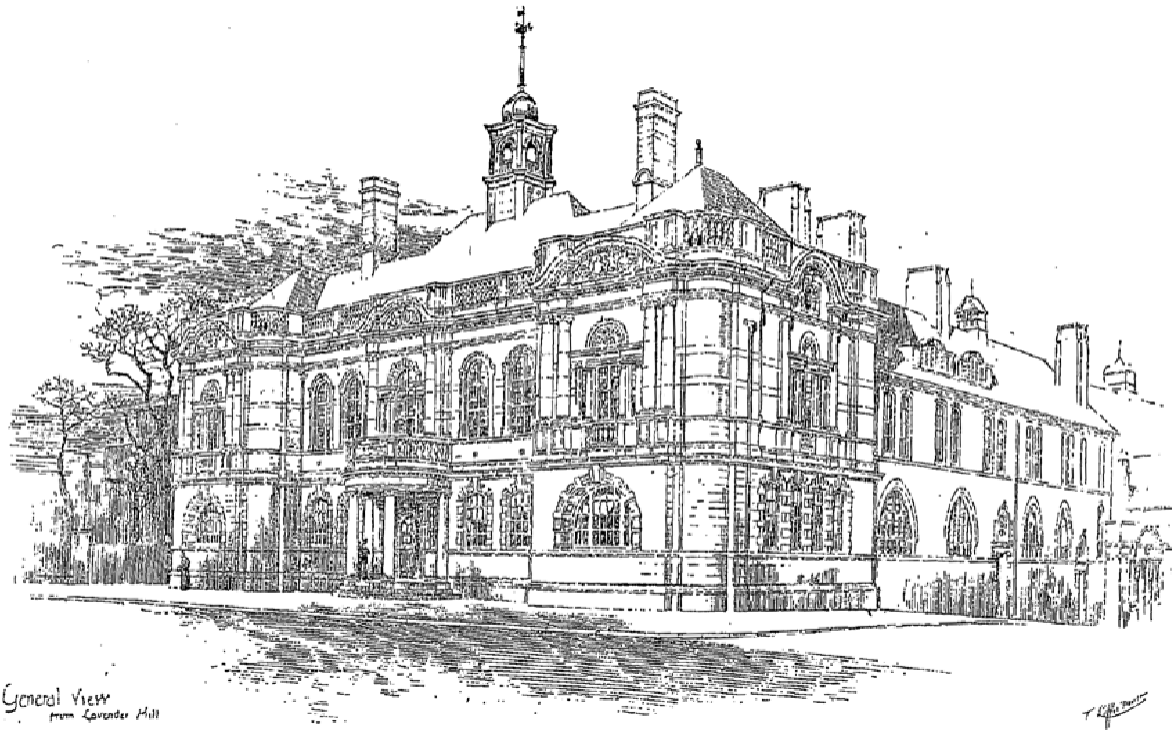
A 21st Century Town Hall

Rebecca Holt

Executive Director & Deputy
CEO Battersea Arts Centre

Martin Lydon

Associate
Haworth Tompkins



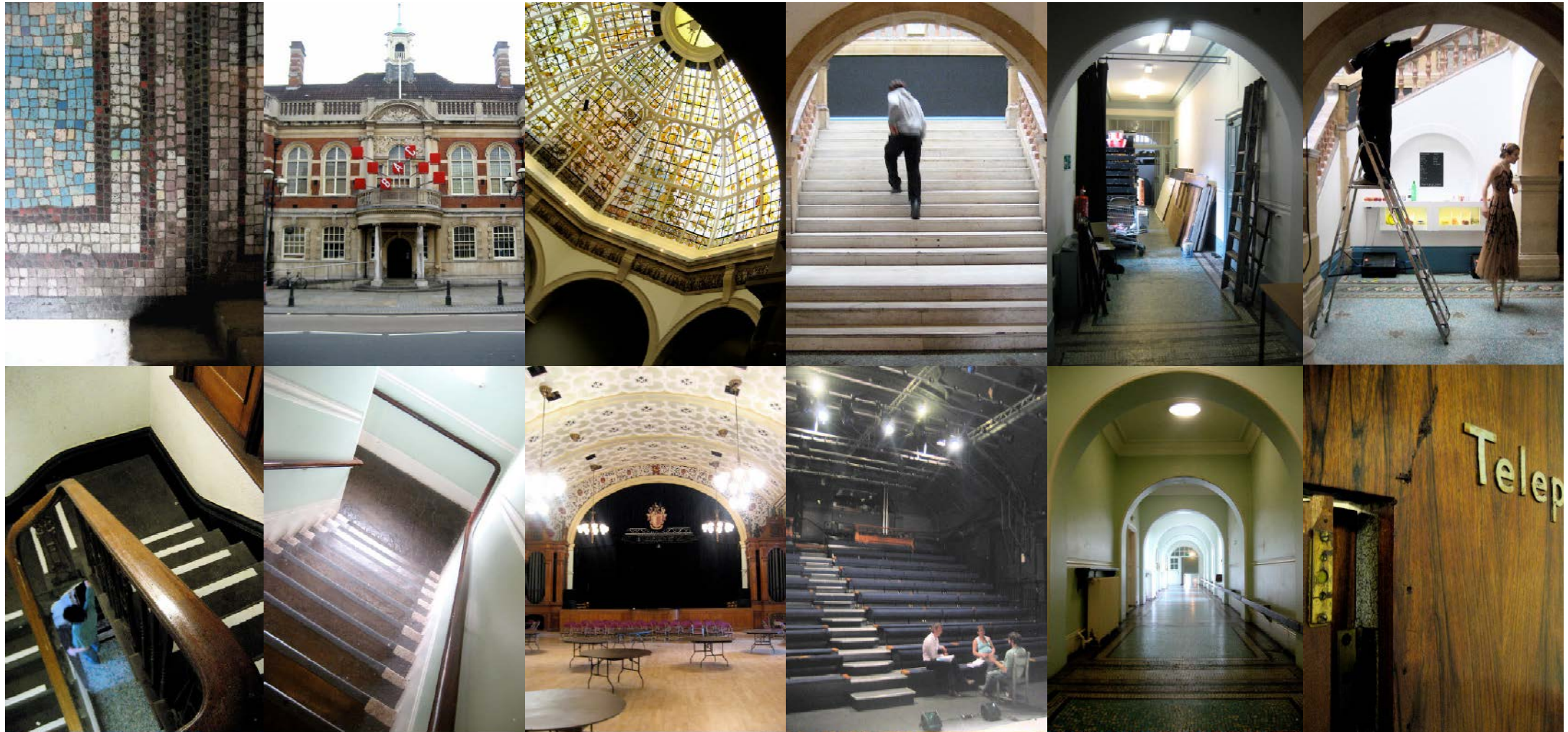
**Civic
function**

1893 - 1965



**Community
value**

1971



An arts organisation but not an arts building

2006



Creatively 'scratching' the building

2007



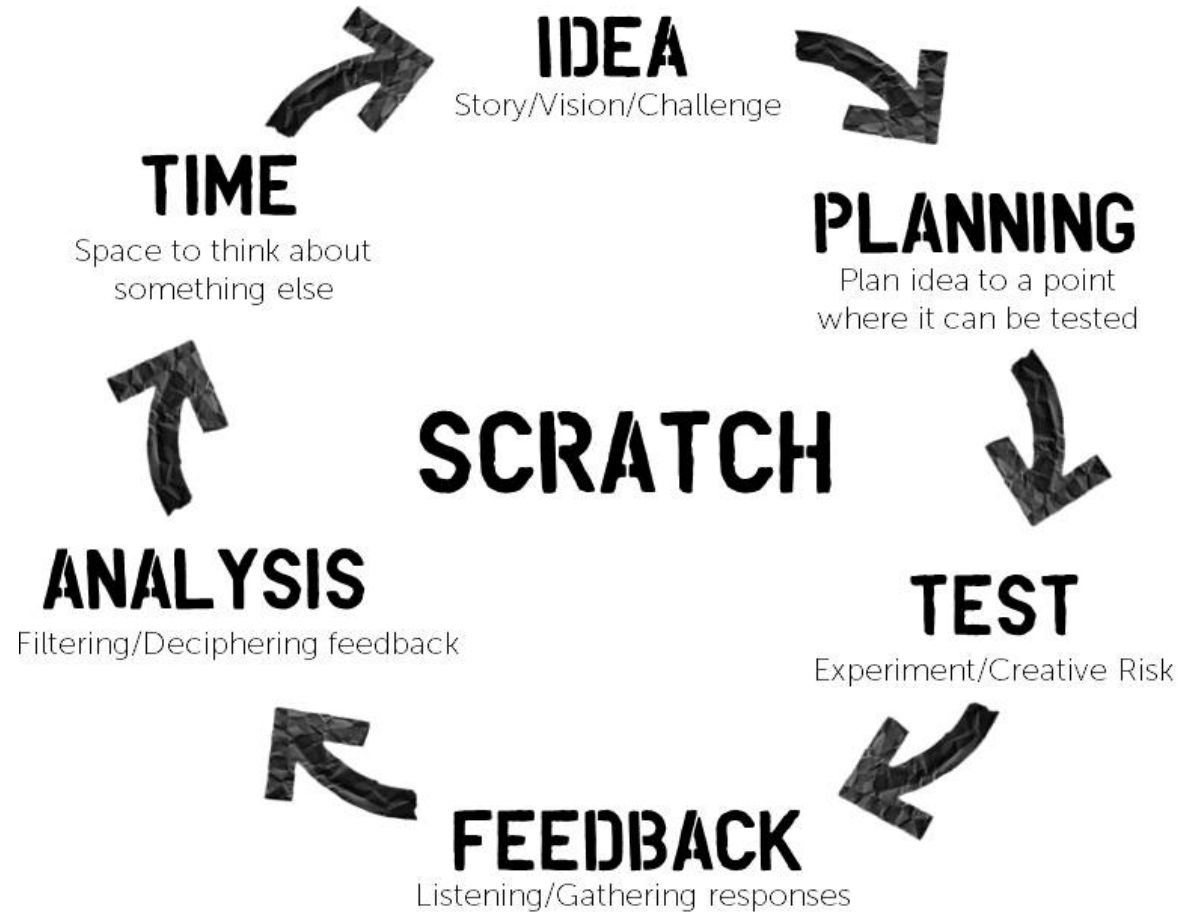
**Building-wide
performance**

2007



**'Fuzzy
Surgeries'**

2008



**Methodolo
gy**



**Council Chamber
'Scratch'**

2011

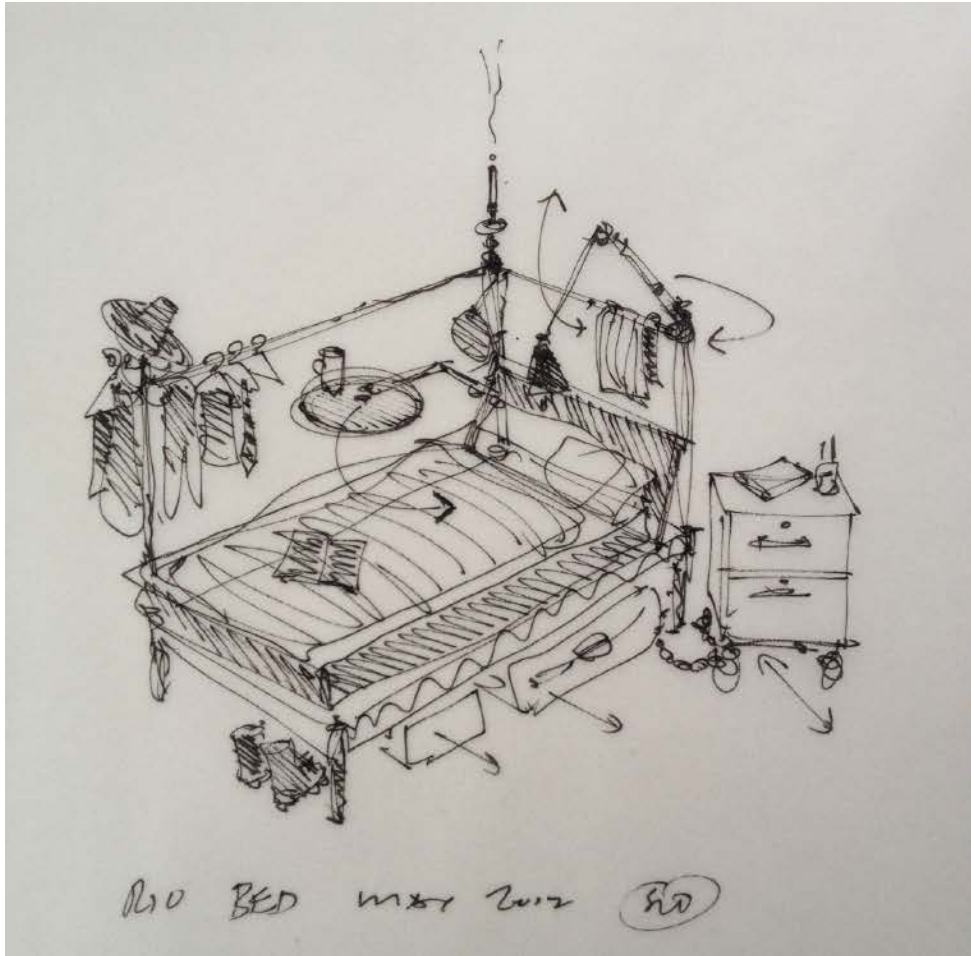


200
6



**Bees Knees
'Scratch'**

2011



**Bedrooms
'Scratch'**

2012



£ 516,172.00
BUDGET COST

Items reduced or transferred to Phase 2 & Wish List to bring cost in-line with BLF grant



£ 234,047.00
BUDGET COST



£ 215,222.00
BUDGET COST

■ = £ 10,000

KEY TO WORK CATEGORIES

- General internal
- refurbishment Fixtures & fittings
- Thermal & acoustic
- performance Theatre technical
- infrastructure Electrical
- services
- Mechanical
- services Sanitary
- areas External
- works Other areas
- Additional costs
(including contractor prelims & contingency)

Change since previous stage

Nimble budgeting



**Capital building
project**

2014-2016

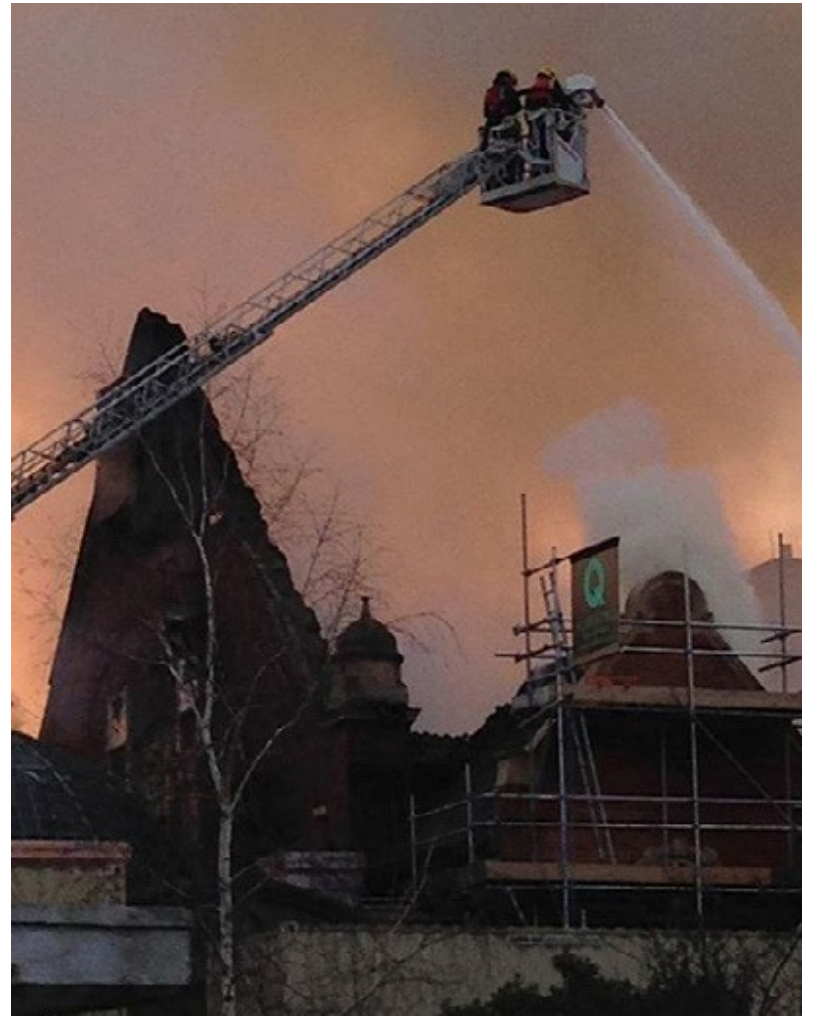


Revealing new possibilities

2015



**Community co-
creation**



2015



2015



2016



**Phoenix
season**

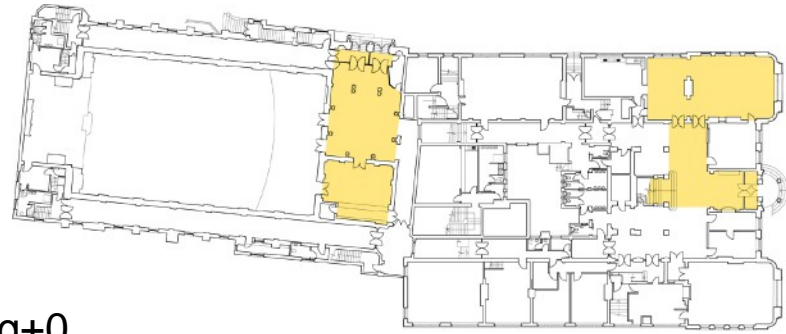
2018



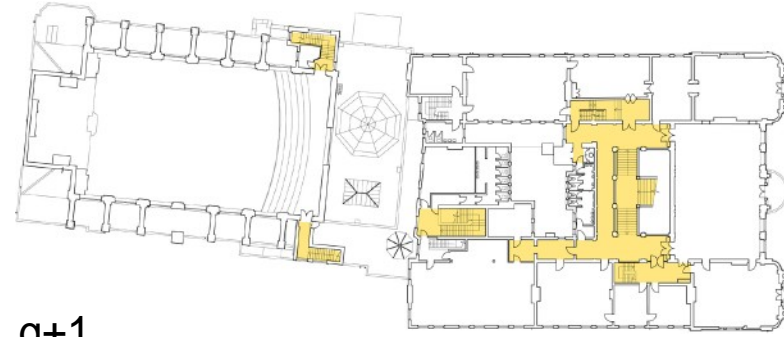
Scratch Hub/ The Agency



**Heritage
installations**

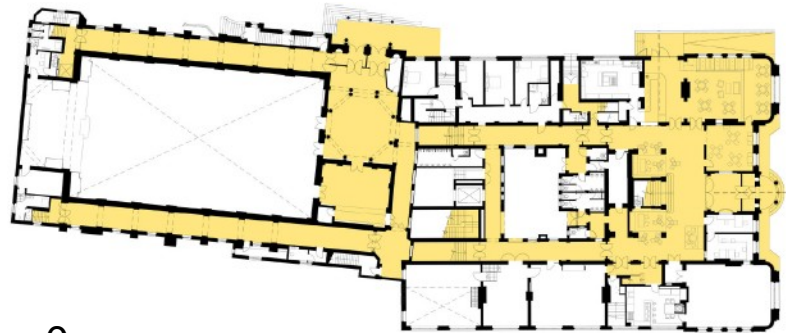


g+0

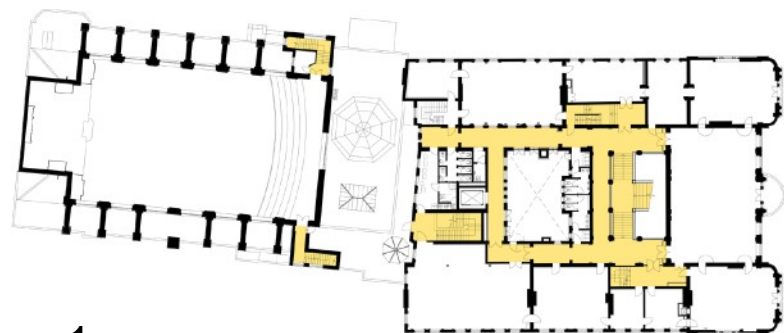


g+1

Existing
g



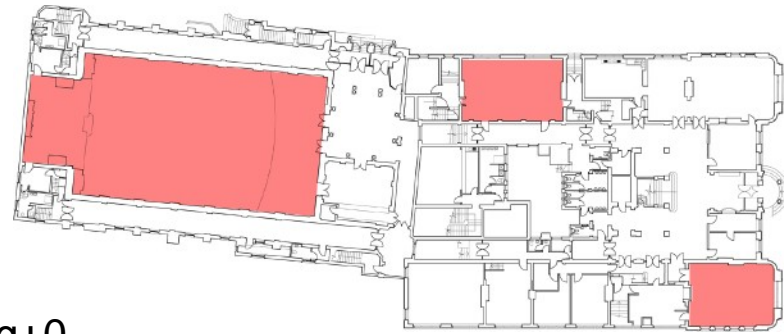
g+0



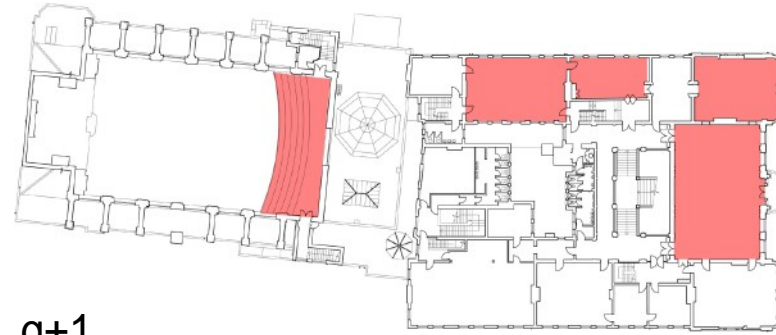
g+1

Proposed
d

**Public
access**



g+0

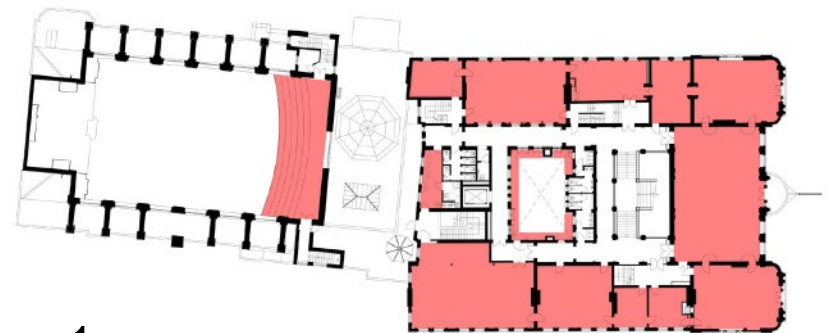


g+1

Existing
g



g+0



g+1

Proposed
d

**Performance
space**

Area	2006/7	2018/9
Lease	6 months	125 years to 2133
TURNOVER	£1.6M	£6.1M FORECAST AT Q3
Staff	24 FTE approx	62.8 fte
RENT	PEPPERCORN	PEPPERCORN TIL 2028 THEN £150K PER YEAR
MAINTENANCE	COUNCIL RESPONSIBLE	BAC responsible
Spaces in active use	Approx. 25 rooms were in day-to-day use	APPROX. 80 ROOMS are in day-to-day active use
Performance spaces in front of building	3 spaces 1 rehearsal room 250 seating capacity	11 flexible spaces 586 seating capacity subject to building licence

Some numbers



a 21st Century Town Hall



DEAR
PRESIDENT TRUMP

NOT FOR ME, NOT FOR YOU
BUT FOR US

LOVE
BATTERSEA ARTS CENTRE

DIFFERENCE
IS
BEAUTIFUL

BUILD BRIDGES
NOT WALLS

LOVE
TRUMPS
ALL

WOMEN
ARE
POWERFUL

EVERYONE IS CREATIVE

WE ARE OPEN

#BACPhoenix

MORE
ART NOW

UNITED WE STAND